



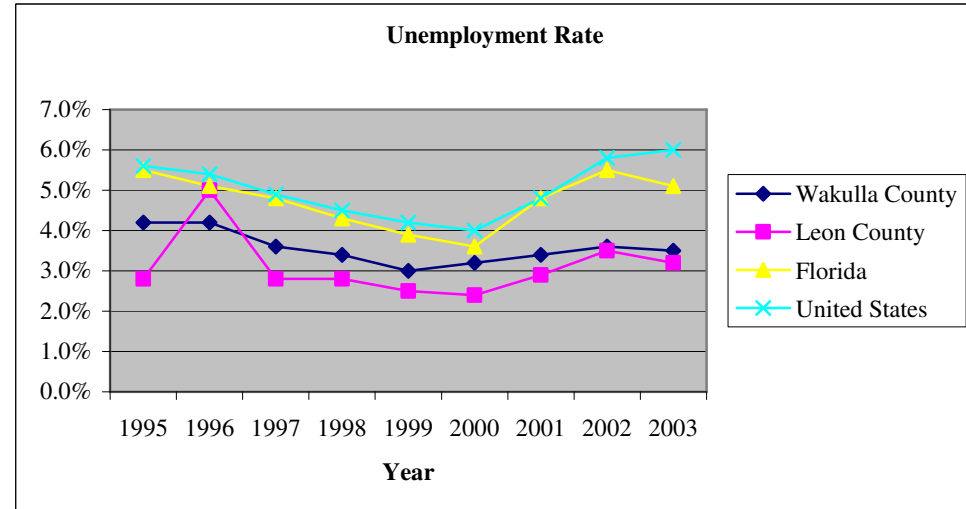
ECONOMY
Indicator 1: Unemployment Rate

Indicator:

Percentage of people age 16 and older who were seeking but unable to find work

Analysis:

Wakulla County's unemployment rate has remained consistently below Leon County's, the state's and the nation's. Since the Year 2000, the unemployment rate has risen locally, statewide, and nationally, reflecting the economic slowdown.



Data source:

Florida Agency for Workforce Innovation
 Florida Research and Economic Database

Website:

<http://www.labormarketinfo.com/>

	1995	1996	1997	1998	1999	2000	2001	2002	2003
Wakulla County	4.2%	4.2%	3.6%	3.4%	3.0%	3.2%	3.4%	3.6%	3.5%
Leon County	2.8%	5.0%	2.8%	2.8%	2.5%	2.4%	2.9%	3.5%	3.2%
Florida	5.5%	5.1%	4.8%	4.3%	3.9%	3.6%	4.8%	5.5%	5.1%
United States	5.6%	5.4%	4.9%	4.5%	4.2%	4.0%	4.8%	5.8%	6.0%



ECONOMY

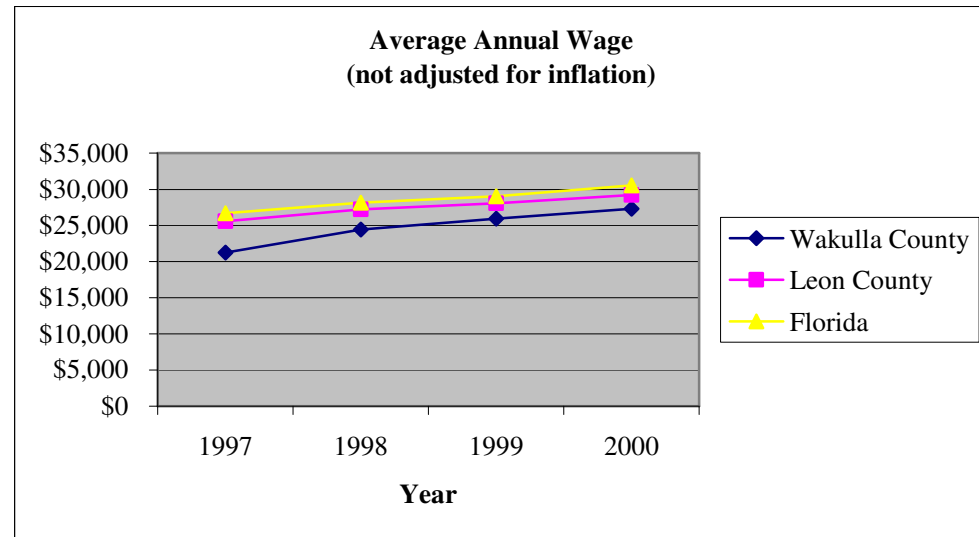
Indicator 2: Average Annual Wage

Indicator:

Average annual wage and salary per full- and part-time job.

Analysis:

Wakulla County’s average wage has remained slightly below that of Leon County and the State average since 1995 reflecting the community’s largely rural economy. In constant (inflation-adjusted) dollars, average wage has grown about 10.6% over 6 years – at a rate of 1.8% per year.



Data source:

Florida Agency for Workforce Innovation
Florida Research and Economic Database

Economic and Demographic Research, The Florida Legislature (inflation adjustment index)

Website:

<http://www.labormarketinfo.com/>

	<i>1997</i>	<i>1998</i>	<i>1999</i>	<i>2000</i>
Wakulla County	\$21,232	\$24,436	\$25,971	\$27,321
Leon County	\$25,599	\$27,237	\$28,098	\$29,255
Florida	\$26,707	\$28,189	\$29,041	\$30,566

* Not shown on graph – adjusted in 2002 dollars.



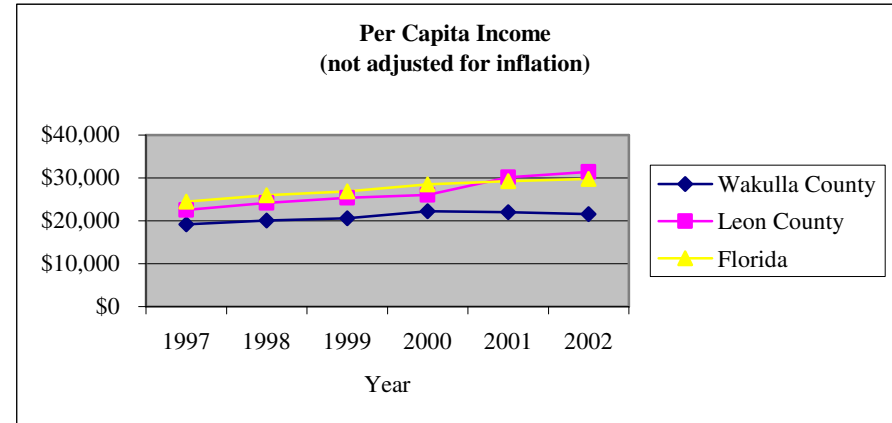
ECONOMY
Indicator 3: Per Capita Income

Indicator:

Average personal income from wages, public pensions, social security, interest, public assistance, and other sources.

Analysis:

Average income in Wakulla County has constantly remained below Leon and state averages. Contrary, to slight increases in Leon County and the state, Wakulla's per capita income, in constant (inflation-adjusted) dollars, income decline by 3% since 2000.



Data source:

Florida Agency for Workforce Innovation
 Florida Research and Economic Database

Economic and Demographic Research, The Florida Legislature (inflation adjustment index)

Website:

	1997	1998	1999	2000	2001	2002
Wakulla County	\$19,198	\$20,088	\$20,584	\$22,269	\$22,001	\$21,574
Leon County	\$22,536	\$24,153	\$25,345	\$26,061	\$30,164	\$31,449
Florida	\$24,502	\$25,987	\$26,894	\$28,511	\$29,247	\$29,758

* Not shown on graph – adjusted in 2002 dollars



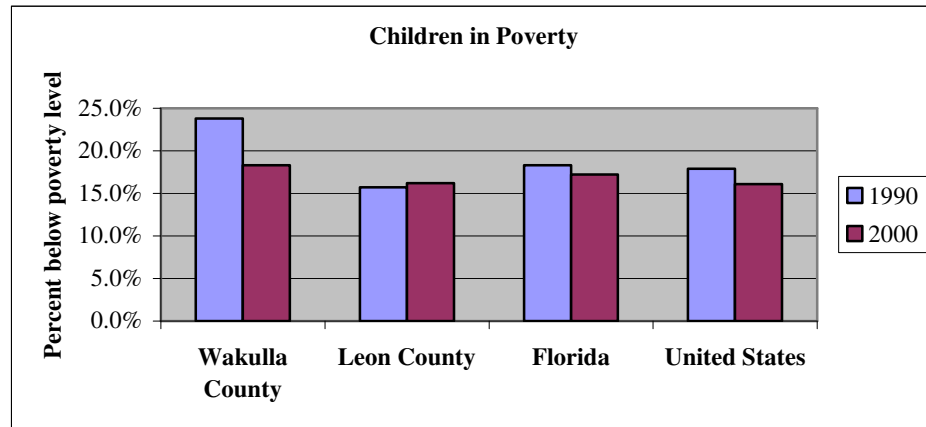
ECONOMY
Indicator 4: Children in Poverty

Indicator:

Percent of children, ages 0-18, living in families below the federal poverty level (e.g., in 2002, \$15,020 for a one-parent family with two children; \$18,100 for a two-parent family with two children).

Analysis:

Wakulla County's child poverty rate has declined nearly 5 percent in the last decade; improvement over that of Leon County, the State and the Nation.



	1990	2000
Wakulla County	23.8%	18.3%
Leon County	15.7%	16.2%
Florida	18.3%	17.2%
United States	17.9%	16.1%

Data source:

U.S. Decennial Census

Websites:

<http://factfinder.census.gov/servlet/BasicFactsServlet>

http://www.censuscope.org/us/s12/c129/chart_poverty.html



ECONOMY

Indicator 5: Child Poverty by Family Type and Age

Indicator:

Percent of children living below the federal poverty level, by age group (under 6 vs. 5-17) and family type (female-headed family, no husband present vs. married couple family), as of 2000.

Analysis:

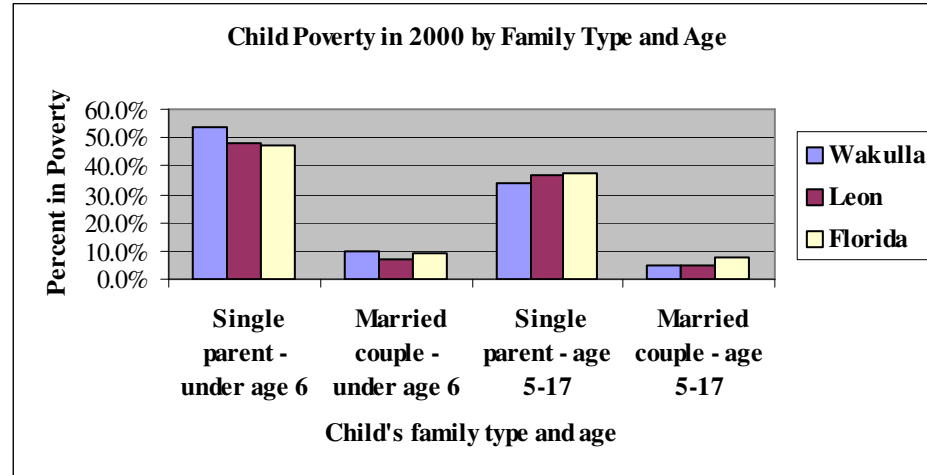
Children in single, female-headed families are much more likely to be in poverty than children in married couple families. This is particularly true for very young children under age 6. Wakulla County exceeds levels in Leon County and Florida by 6% especially in single parents with children under age 6.

Data source:

U.S. Decennial Census

Website:

<http://factfinder.census.gov/servlet/BasicFactsServlet>
<http://aspe.os.dhhs.gov/poverty/02poverty.htm>



Child in Poverty in 2000	Wakulla	Leon	Florida
Single parent - under age 6	53.6%	47.8%	47.4%
Married couple - under age 6	10.2%	6.8%	9.0%
Single parent - age 5-17	34.0%	36.7%	37.2%
Married couple - age 5-17	4.7%	5.1%	8.1%



ECONOMY
Indicator 6: Home Ownership

Indicator:

Percent of housing units that were owner-occupied.

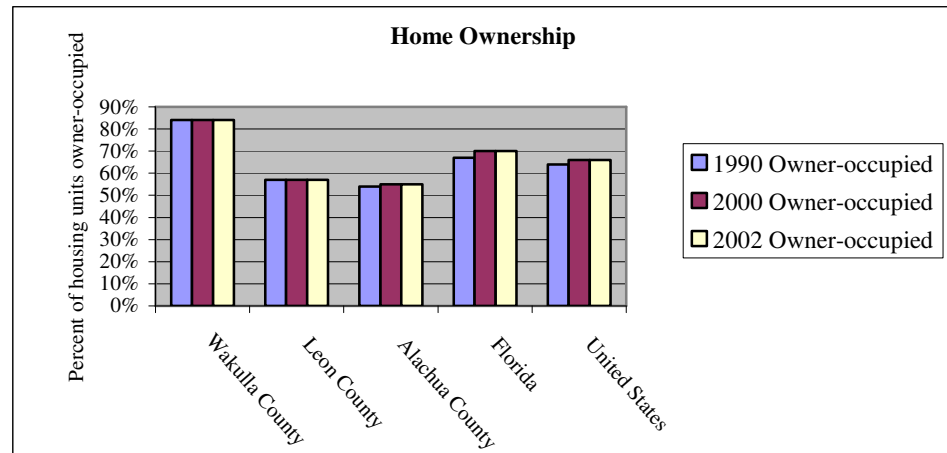
Analysis:

Wakulla County home ownership towers above that of Leon County, Florida and the U.S. Based on prior research lower home ownership index in Leon County responds to the large number of college students.

Data source:

U.S. Decennial Census

Websites: <http://factfinder.census.gov/servlet/BasicFactsServlet>
<http://www.shimberg.ufl.edu/>



	1990		2000		2002	
	Owner-occupied	Renter-Occupied*	Owner-occupied	Renter-occupied*	Owner-occupied	Renter-occupied*
Wakulla County	84%	16%	84%	16%	84%	16%
Leon County	57%	43%	57%	43%	57%	43%
Alachua County	54%	46%	55%	45%	55%	45%
Florida	67%	33%	70%	30%	70%	30%
United States	64%	36%	66%	34%	66%	34%

Note: Excludes condominiums and mobile homes.